



wiTECH 2.0

MDP registration on wiTEXEDI
MDP upgrade to wiTECH 2.0



Review	Date	Description
1	07/04/2021	First draft



To work on wiTECH 2.0, the MDP must be registered on wiTEXEDI and associated with the UserID of the user who utilises it.

Home
Personal information
Documents
Calendar

From the wiTEXEDI menu, select
VCI Association

Vci Asset
Management
Vci Association

Insert Serial Number
of the microPOD

Save association

Errors	User	Vci Serial Number	Market	First/last name	Details
		1	ITALY		
			AFGHANISTAN		
	0062230.d672	MDP-007340	11700		

YYYY/MM/DD INFORMATION & COMMUNICATION TECHNOLOGY - EMEA Region - MOPAR & AfterSales

2

- ❑ Each user can only associate MDPs with their own UserID
- ❑ It is possible to enter more than one MDP under the same UserID
- ❑ **IMPORTANT: CHECK THAT THE SERIAL NUMBER OF THE MDP IS CORRECT. AN INCORRECT CODE WILL NOT ALLOW THE MDP TO BE DISPLAYED ON WITECH 2.0**

MDP registration on wiTEXEDI




Vci Association

Errors	User	Vci SerialNumber	Dealer Code	Market	First/last name	Details
<input type="checkbox"/>	<input type="text"/>	<input type="text"/>	<input type="text"/>	<input type="text" value="AFGHANISTAN"/>	<input type="text"/>	<input type="text"/>
	0062230.d672	MDP-007340	11700	TALY	Ugo Panero	info@fiat.com

- ❑ All other fields will be filled in automatically based on the user's information
- ❑ The association with the MDP can be deleted in case of error

Delete association



Vci Association

Errors	User	Vci SerialNumber	Dealer Code
<input type="checkbox"/>	<input type="text"/>	<input type="text" value="MDP-007340"/>	<input type="text" value="11700"/>
	0070713.d037	WFP-12507	0070713

Enter SN and click on "Vci SerialNumber" to filter

Association completed successfully

- ❑ Once the association is entered, after a few minutes it is sent and automatically registered on wiTECH 2.0
- ❑ If the MicroPOD association is successful, an OK flag (green) will appear

MDP upgrade to wiTECH 2.0



- ❑ Launch the **"microPOD Setup Utility"** program by clicking on the icon



- ❑ If the application is obsolete, an automatic update and the Visual C++ complement, if necessary, will be suggested

microPOD Setup Utility - InstallShield Wizard



microPOD Setup Utility requires the following items to be installed on your computer. Click Install to begin installing these requirements.

Status	Requirement
Installing	Microsoft Visual C++ 2019 Redistributable Package (x86)

- ❑ Then relaunch the **"microPOD Setup Utility"** program by clicking on the icon



- ❑ the following screen will appear

microPOD Setup Utility 1.1.0018



Starting the microPOD Setup Utility...

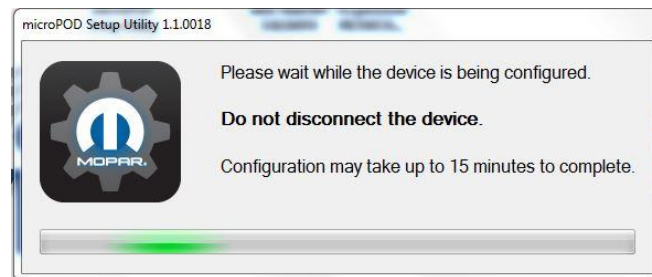
MDP upgrade to wiTECH 2.0



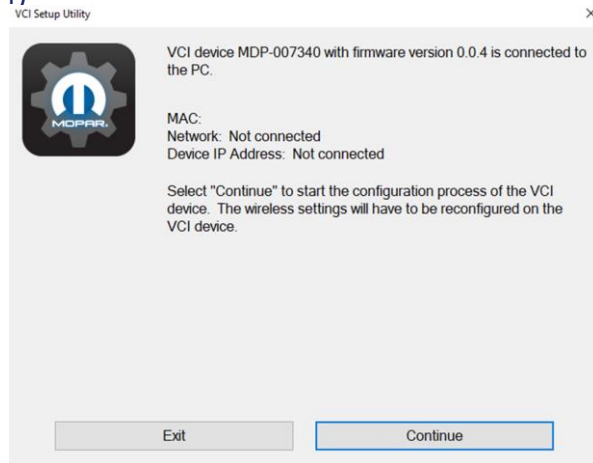
- ❑ Connect the MDP to the USB port on the PC and click on "Continue"



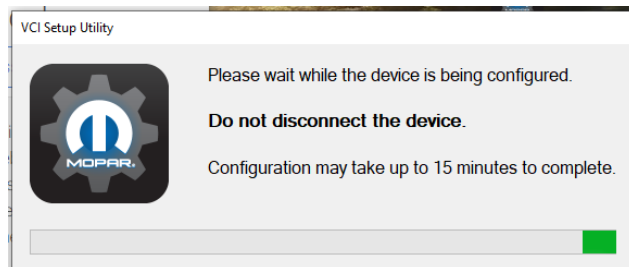
- ❑ Wait for completion of the update without disconnecting the MDP



- ❑ The device will indicate if associations to WiFi networks are present and FW version (factory FW version: 0.0.4)



- ❑ Wait for completion of the update without disconnecting the MDP



- ❑ Update done.



- ❑ Click on the suggested link to access Witech2 and proceed to the next available System Release update step



MOPAR

WI TECH Beta

USER

ABCDEFGEH

PSW

XXXXXXXXXX

Dealer Code (SINCOM)

0065405

Link-E-Entry

☐ Ricordami

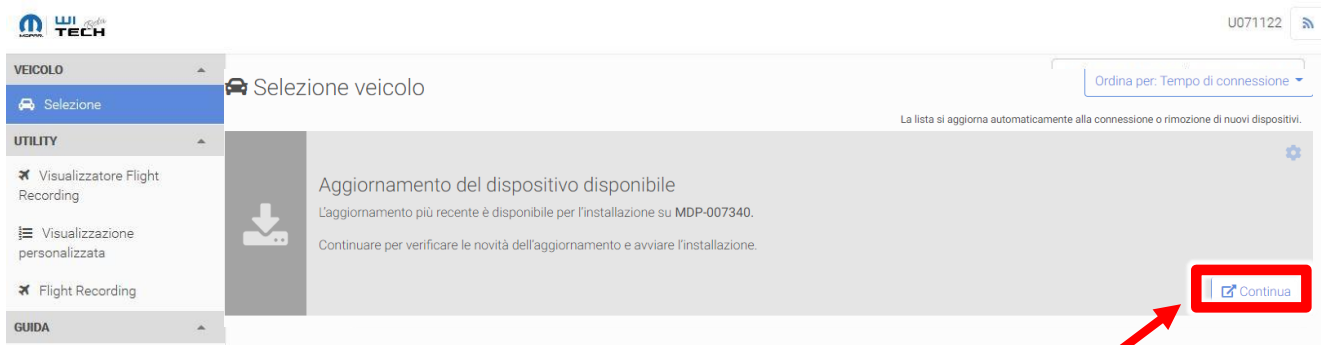
[Accedi](#)

[Edit Preferences](#)

To access

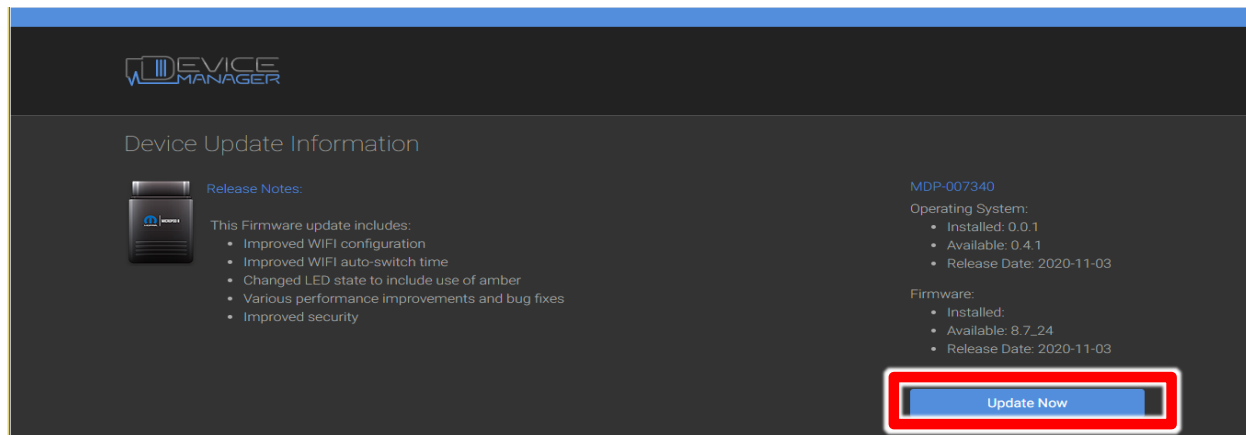
☐ Login on Witech2

- ❑ A MDP update window, giving its identification number, will be shown on the first page of wiTECH 2.0.
Press "Continue" to proceed.



**To proceed with
updating**

- ❑ The system will automatically open the DEVICE MANAGER window, showing the firmware and software currently installed on the MDP and those available on the network. Press "Update Now" to start the update.



To proceed with
updating

MDP upgrade to wiTECH 2.0



- Update in progress (can take up to about 15/20 minutes).

DEVICE MANAGER

Device Update Progress

DO NOT DISCONNECT
Disconnecting a device during the update process may render it inoperable.

EXPECT POWER CYCLES
It is normal for a device to restart single or multiple times during the update.

DEVICE LEDs
The LEDs will reflect various activity during the update process.

MDP-007340

Now updating: Operating System
Status: Downloading install image...

Elapsed Time
00:10

DEVICE MANAGER

Device Update Complete

MDP-007340

Your device is up-to-date and ready for usage in wiTECH 2.0. Press OK to close Device Manager and to release the lock on the device.

OK

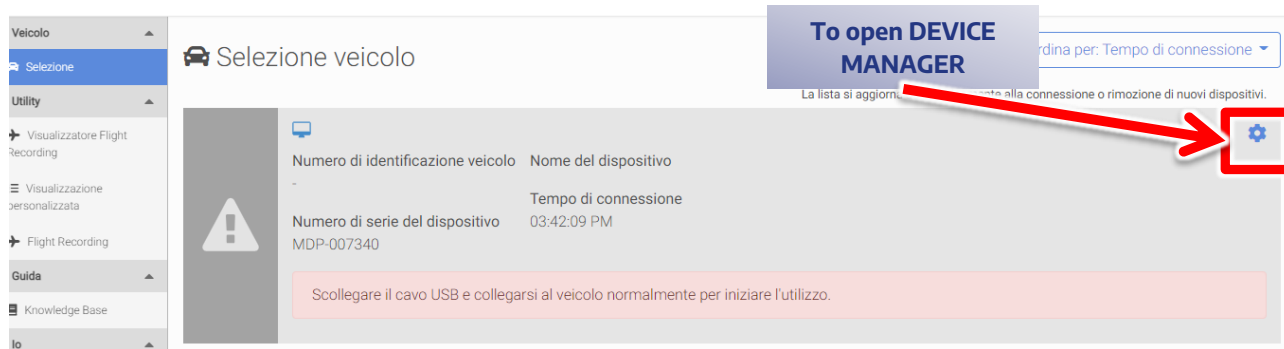
Operating System
0.4.1

Firmware
8.7_24

Update successful

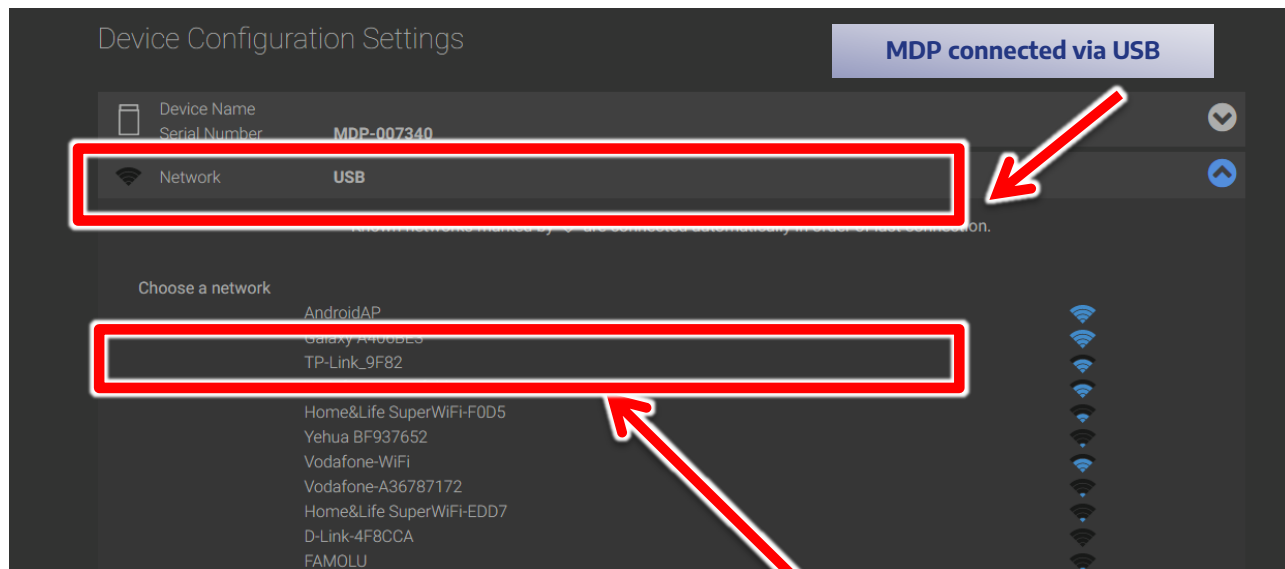
DO NOT disconnect the MDP from the USB and DO NOT close the "microPOD Setup Utility" application

Open the **DEVICE MANAGER** by pressing the gear-shaped button



If the screen with the device does not appear, check that it is registered on wiTEXEDI and that there are no security components installed on the PC preventing access to the cloud

- ❑ The MDP is connected via USB
- ❑ Select the WiFi network to which you want to connect the MDP



To select the WiFi network

MDP upgrade to wiTECH 2.0 FOR INTERNAL USERS



❑ If the "Witech2" network is selected, enter:

- Password e.g.: XXXXXXXXXXXXXXXXXXXX
- Proxy Address e.g.: 10.12.9.168:8080

❑ It is also possible to select a network without PROXY or a specially created HOTSPOT by entering the relevant parameters (PASSWORD and/or PROXY ADDRESS)

Device Name
Serial Number MDP-007340

Network USB IP USB

Enter password for Witech2

Password XXXXXXXXXXXXXXXXXXXX

Show password ☒

Use proxy ☒

Proxy Address 10.12.9.168:8080

Proxy username

Proxy password

Proxy password

To connect

Enter network password

Enter network proxy

Connect Cancel

- ❑ Wait for the selected network to connect



Device Configuration Settings



Device Name **RDM-WFP-07333**


Serial Number **WFP-07333**



Network **USB**

IP **USB**



Connecting to Witech2... 

This may take up to 2 minutes.



About



MDP upgrade to wiTECH 2.0



- ❑ From now on, the MDP is configured to use WiFi to work with the selected network
- ❑ Close the DEVICE MANAGER and disconnect the MDP from the USB



Device Configuration Settings

Device Name: MDP-000000

Network **USB & WiFi (Witech2)** IP 10.13.11.10

✓ Witech2

Witech2-TMP

mvweb

MA2

FG-WiFi

LACCESSII

TIM_PN51T_49F2

Join other network

Manage networks

MicroPOD connected to the network

MDP upgrade to wiTECH 2.0



- ❑ Close the **"microPOD Setup Utility"** application

VCI Setup Utility



The VCI device MDP-007340 has been configured for wiTECH 2.0 application. Please configure the device wireless settings and connect to wiTECH 2.0 to receive further update.

<https://login.e.fcawitech.com>

To close

Exit